

Refractories from Linco Baxo China Co. Ltd Tianjin

来自林肯博克中国天津的耐火材料

linco baxo group of companies
林肯博克集团公司



THE WORLD OF LINCO BAXO
THE PRODUCTS



林肯博克的世界
产品



linco baxo

Refractories

www.lincobaxo.com

INTRODUCTION

簡介

OUR BRANDS

我們的品牌



Linco Baxo group of companies has been manufacturing and supplying Linco, Baxo, Kero and Maref refractories since 1949 to:

- Blast furnaces
- Steel and iron
- Metallurgical industry
- Foundries (ferrous and non ferrous)
- Aluminium
- Power station and vessels
- Incinerators
- Ceramic and heavy clay
- Cement and lime industry
- Chemical / Petrochem
- Glass

The products range has been manufactured a different European plants for more than sixty years and at a modern state of the art chinese plant in Tianjin for more than ten years.

The purpose of this catalogue is to provide a selected overview of Linco Baxo products range. Other products can be manufactured according to customers requirements.



自1949年，林肯博克生产了Linco,Baxo,Kero,Maref:

- 高炉
- 钢铁
- 冶金
- 铸造厂(黑色金属和有色金属)
- 铝
- 电力和船舶等各个行业
- 焚化炉
- 陶瓷和重质粘土
- 水泥和石灰行业
- 化工、石化
- 玻璃



我们的产品在欧洲不同的生产基地已有60多年的生产历史,而且在中国天津建立了一个现代化的工厂,以历10余年.

本产品说明书提供林肯博克各系列产品概览，其他产品按客户需求定制.

TEC REF



KERO



ITE



LICOFEST - BAXOPLAST - BAXOGUN



DENSE CASTABLES AND GUNNING MIXES - 重质浇注料和喷补料

linco baxo



The **Licofest** range of products are dense castables from normal grades for standard applications to high alumina products with superior hot strength and dimensional stability.

Baxoplast is a plastic casting mix which couples the ease of casting installation to mouldable properties with high resistance to temperature spalling and thermal shock.

Baxogun is a dry plastic gunning mix, which can be easily and quickly placed it is recommended as alternative to other techniques.

All products listed below are originated in our plant in Tianjin.

Itemised technical data sheets are circulated under the trade code SN.



Licofest系列重质浇注料，涵盖了能满足普通应用的常规产品和其它高铝产品，皆具有优异的热强度和尺寸稳定性。

Baxoplast系列可塑浇注料，具有浇注安装成型方便、抗剥落性高、抗热震性高等优点。

Baxogun系列干式可塑喷补料，它可以容易快捷地粘附，是其它技术的理想替代品。

下列产品均由天津工厂生产，代码为SN。

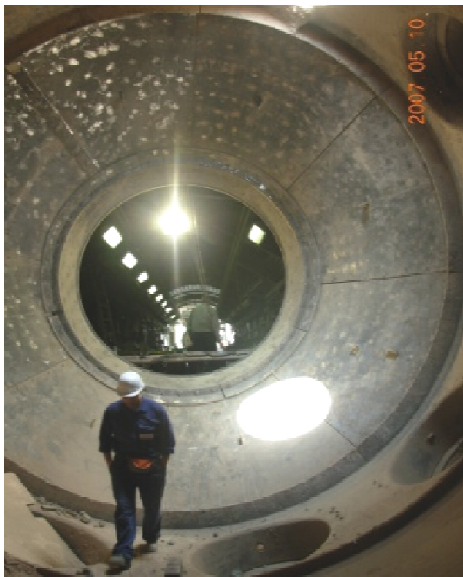
Brandname	Plant	Classification temperature °C	Chemical Analysis %			BD kg/m ³ at 815° C.	Setting	CCS		TC W/Mk at 800° C.	Installation
			Al ₂ O ₃	Fe ₂ O ₃	SiO ₂			N/mm ²	°C		
LICOFEST 18 HT	SN	1350	44	3	43	1990	H	35 a 25 a	105°C 815°C	0,63	C - V
LICOFEST 28 HT	SN	1500	50	1	43	2050	H	32 a 25 a	105°C 815°C	0,74	C - V
LICOFEST 20 C	SN	1400	42	3	44	1960	H	34 a 20 a	105°C 815°C	0,68	C - V
LICOFEST 28 C	SN	1450	46	1,5	45	2000	H	35 a 25 a	105°C 815°C	0,68	C - V
LICOFEST 37 C	SN	1600	63	1	29	2250	H	45 a 40 a	105°C 1100°C	0,94	C - V
BAXOPLAST 1700	SN	1700	63	0,9	32	2200	H - CH	5,8 a 25 a	105°C 1100°C	0,98	C
LICOFEST H 82	SN	1700	85	1,2	5	2650	H	45 a 35 a	105°C 1100°C	1,6	C - V
LICOFEST KOR 94	SN	1730	94	0,4	0,5	2960	H	60 a 110a	105°C 1200°C	2,2	C - V
LICOFEST TAL 96 K	SN	1740	93	0,6	2	2700	H	50 a 40 a	105°C 1200°C	1,6	C - V
LICOFEST SiC V 30 TR	SN	1400	40	30 (SiC)	25	2150	H	55 a 48 a	105°C 1100°C	2,85	G - TW
BAXOGUN 606 S	SN	1610	57	0,9	42	2010	H - CH	2,8 a 13 a	105°C 1100°C	0,98	G

LICOFEST - BAXOVIBRO



LOW CEMENT CASTABLES - 低水泥浇注料

linco baxo



Licofest PL are low cement castables (LCC) which require less water for vibration installation. Their outstanding properties make them a popular choice for severe operations.

Baxovibro are high tech LCC grades made with premium raw materials and special binders. They require little moisture for vibration casting.

Because of the minimal amount of CaO in them, these products have superior hot and cold strengths exhibiting outstanding refractoriness.

All these products are tailored for use in severe service conditions.

All products listed below are originated in our plant in Tianjin.

Itemised technical data sheets are circulated under the trade code SN.



Licofest PL系列低水泥浇注料（LCC），震动安装时用水少，性能优异，深受欢迎。

Baxovibro系列是LCC的高技术产品，由优质原料和特种粘合剂制成，振动浇注时用水量少。

因氧化钙含量极低，使产品具有优良的热冷强度和卓越的耐火度。

所有这些产品都专为恶劣工作气氛精心设计和制造。

下列产品均由天津工厂生产，代码为SN。

Brandname	Plant	Classification temperature °C	Chemical Analysis %			BD kg/m ³ at 815° C.	Setting	CCS		TC W/Mk at 800° C.	Installation
			Al ₂ O ₃	Fe ₂ O ₃	SiO ₂			N/mm ²	°C		
LICOFEST PL 320 QH	SN	1500	52	0,8	45	2150	H - CH	70 a 65 a	105°C 1100°C	1	V - RD
BAXOVIBRO VT 336	SN	1600	58	1	36	2400	H - CH	60 a 90 a	105°C 1100°C	1	V
LICOFEST PL 370 QH	SN	1580	66	1	29	2400	H - CH	85 a 80 a	105°C 1200°C	1,01	V - RD
BAXOVIBRO VT 370 QH	SN	1600	67	1	27	2450	H - CH	95 a 100 a	105°C 1200°C	1,01	V - RD
BAXOVIBRO VT 820 QH	SN	1700	82	1,2	10	2800	H - CH	100 a <100 a	105°C 1300°C	1,6	V
BAXOVIBRO VT 95 COR	SN	1800	96	0,2	2	3100	H - CH	83 a <100 a	105°C 1300°C	2,64	V
BAXOVIBRO VT 35 SiC	SN	1600	35	34 (SiC)	28	2510	H - CH	55 a 50 a	105°C 815°C	2,85	V
LICOFEST SiC 60 CL	SN	1600	33	59 (SiC)	6	2500	H - CH	83 a <100 a	105°C 1200°C	4,8	V
BAXOVIBRO VT ZMX SUPER 0-10	SN	1670	54	26 (ZrO ₂)	16	3000	H - CH	<120 a <100 a	105°C 1300°C	1,6	V

Please refer to page 7 for instructions and setting keys

Terms of sale download at : www.lincobaxo.com/terms

Use instructions download at : www.lincobaxo.com/instructions

INSULATING LIGHT/MEDIUM WEIGHT CASTABLES - 轻质和中质隔热浇注料

linco baxo



Licofest L-FL are hydraulic setting light and medium weight castables featuring excellent insulation characteristics coupled with good refractoriness.

All these products may be supplied for application placement by gunning.

Licofest PC have been specially designed and formulated especially for use in the oil refining industry and they have proven to be very reliable through many years of successful use.

They exhibit low thermal conductivity, high heat insulating characteristics and conform to ASTM C-401-91 and EXXON-BP- 19.3.3 specifications.

All these product may be supplied for installation by gunning (code TR).

All products listed below are originated in our plant in Tianjin.

Itemised technical data sheets are circulated under the trade code SN.



Licofest L-FL系列是水硬性轻质和中质浇注料,具有良好的耐火性和隔热性.

所有产品都可用喷补方法施工应用.

Licofest PC系列专为炼油工业设计制造,已经多年成功使用,性能非常可靠.

导热率低,耐热绝缘特性优异,符合ASTM C-401-91和EXXON-BP-19.3.3标准.

所有这些产品可由喷补方法(代码TR)安装.

下列产品均由天津工厂生产,代码为SN.

Brandname	Plant	Classification temperature °C	Chemical Analysis %			BD kg/m ³ at 815° C.	Setting	CCS		TC W/Mk at 800° C.	Installation
			Al ₂ O ₃	Fe ₂ O ₃	SiO ₂			N/mm ²	°C		
LICOFEST 5V	SN	1000	31	10	32	540	H	1 a 105°C 0,7 a 815°C		0,18	C - G
LICOFEST L05	SN	1020	28	11	33	600	H	1 a 105°C 0,75 a 815°C		0,18	C - G
LICOFEST L 08 CH	SN	1260	39	5	37	855	H	3,1 a 105°C 2 a 815°C		0,2	C - G
LICOFEST L 091	SN	1100	30	9	44	1000	H	5,5 a 105°C 3,5 a 815°C		0,32	C - G
LICOFEST FL 201	SN	1250	35	6	43	1350	H	15 a 105°C 11 a 815°C		0,44	C - G
LICOFEST FL 35	SN	1450	49	1,5	42	1500	H	15 a 105°C 5 a 815°C		0,48	C - G
LICOFEST FL 40	SN	1520	58	1	33	1560	H	20 a 105°C 13 a 815°C		0,48	C - G
LICOFEST PC 105	SN	1100	30	8	31	600	H	1,05 a 105°C 0,75 a 815°C		0,18	C
LICOFEST PC 105 BT	SN	800	9	5,5	33	520	H	1 a 105°C 0,75 a 815°C		0,18	C - G
LICOFEST PC 123 I	SN	1100	34	7	38	990	H	3 a 105°C 3,4 a 1100°C		0,24	C
LICOFEST PC 124 I	SN	1100	30	9	39	875	H	3,5 a 105°C 3 a 815°C		0,23	C
LICOFEST PC 124 I CB	SN	1250	45	1,9	31	910	H	2,8 a 105°C 2 a 815°C		0,23	C
LICOFEST PC 14 HT	SN	1370	40	6	38	1410	H	15 a 105°C 11 a 815°C		0,37	C

DRY MORTARS SERVICE CASTABLES AND SPECIALITIES - 干式火泥浇注料与特种产品



Licoton mortar are dry mortars used as a joint materials with alumina and insulating bricks.

Keroseal is a MgO mix for universal applications for EAF, tundishes and ladles formulated for resurfacing/ sealing of existing refractories. It offers high mechanical resistance coupled with low shrinkage.

Linax is a service castable formulated for construction as well as maintenance of existing linings; it is also applicable at hot temperature.

Kerolan 880 is a dry alumina ramming mix tailored as safety layer ladle of the sidewalls.

Kerolan 780R is a dry alumina ramming mix enriched with silicon carbide, tailored as safety layers of ladle in the slag area.

All products listed below are originated in our plant in Tianjin.

Itemised technical data sheets are circulated under the trade code SN.



Licoton火泥：系干式火泥，用于氧化铝与保温砖的填缝材料。

Keroseal氧化镁混合料：广泛用于电炉、中间包、钢包等耐火材料的重铺和密封，提供了高机械阻力和低收缩率。

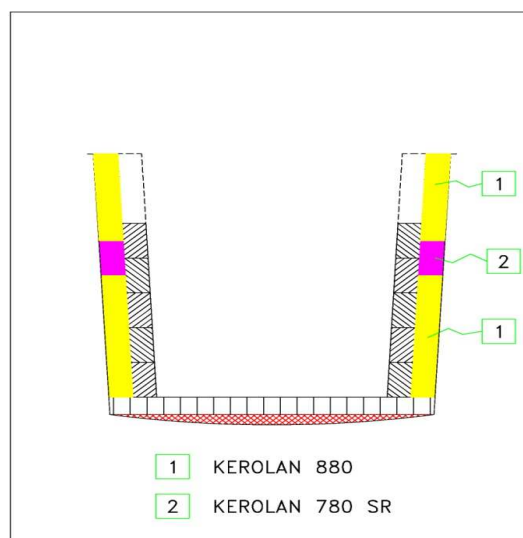
LINAX浇注料：是一种服务性浇注料，用于炉衬的建造和维护，也可以适用于热温度的工作氛围。

Kerolan880系列：是一种干式铝质捣打料，用于钢包侧壁的安全层。

Kerolan780R系列：是一种干式铝质富含碳化硅捣打料，用于矿渣区钢包的安全层。

下列所有产品产自于我们的天津工厂，代码为SN，技术数据分项列表。

Brandname	Plant	Classification temperature °C	Chemical Analysis %			BD kg/m ³ at 815° C.	Setting	CCS		TC W/Mk at 800° C.	Installation
			Al ₂ O ₃	Fe ₂ O ₃	SiO ₂			N/mm ²	°C		
LICOTON MORTAR 40 CH	SN	1500	38	2	58	1900	CH - K	dry mortar (ready to use)			
LICOTON MORTAR 55 CH	SN	1550	52	1,2	46	1950	CH - K	dry mortar (ready to use)			
LINAX 60	SN	1500	60	1,4	32	2000	H	25 a 105°C 20 a 1100°C		0,75	G - RH TW - R - HT
KEROSEAL M 25/6 HS	SN	1700	83 (MgO)	1,4	7	2400	CH - K	6 a 105°C 50 a 1500°C		-	RH - TW G - R
KEROLAN 880	SN	1740	89	-	8	2700	CH - K	-		1,6	DV
KEROLAN 780 SR	SN	1740	80	-	15 (SiC)	2750	CH - K	-		2,64	DV



Please refer to page 7 for instructions and setting keys
Terms of sale download at : www.lincobaxo.com/terms
Use instructions download at : www.lincobaxo.com/instructions

AUXILIARIES

A COMPLETE RANGE OF AUXILIARIES ABLE TO SATISFY ANY NEED - 能够满足任何需求的附加产品

DESCRIPTION
Fireclay and alumina bricks
Insulating and light weight fire bricks ASTM & ISO series
Fused cast blocks
Ceramic fibre products
Soluble fibres
Calcium silicate
Mineral wools
Vermiculite
Metallic anchors
Ceramic anchors



SETTING KEYS:

H	Hydraulic
CH	Chemical
K	Ceramic
A	Air setting

INSTALLATION SYSTEM KEY:

C	Casting, pouring
V	Vibration
G	Gunning
TW	Trowelling
RH	Roughcasting
R	Ramming
HT	Applicable at hot temp
RD	Rodding
DV	Dry vibration

Linco Baxo group of companies assures the quality of its products worldwide. However slight deviations might occur in different manufacturing plants as a results of many factors and usage of natural raw materials. The above information is based on the results of routine production tests. As such is subject to slight variations and therefore should not be used as a specification and do not imply or express warranty of any kind. The figures are correct at the time of publishing (Feb. 2015). ASTM procedures, and EXXON-BP 19,3,3 standards, where applicable, are used for determining the information. Variations to standard products may cause deviations from the figures in the catalogue (Feb. 2015). We recommend that operational temperature limits placed on the products are 100/150°C below the max. temp. (T.max), given a clean, non-corrosive neutral furnace atmosphere. Complete data sheets will be given on request. **LINCO BAXO may develop and manufacture variants of products, totally and specifically tailored to customer requirements.**

林肯博克集团公司在全球范围保障其产品质量。由于各地的天然原材料有所区别和一些其它因素，各制造工厂的产品可能出现轻微差别，上述信息是基于对常规生产实验的测试结果。

鉴于这些轻微的变化,因此不能作为一种标准,也不表明任何保证. 这些数字发布于2015年2月, 是基于ASTM程序和EXXON-BP 19, 3, 3, 标准. 标准产品的变化可能会导致与产品目录 (Feb.2015) 数字的偏差. 我们建议, 放置产品的工作温度极限是低于最高温度100/150度, 且在干净、无腐蚀性、中性炉内. 如有需要, 我们可以提供具体的产品数据.

LINCO BAXO可以专门针对客户的具体要求, 开发和生产各种具体产品.

EUROPE CORPORATE HEADQUARTERS:
LINCO BAXO group of companies
Via C.Boncompagni, 51/8 / I-20139 Milano
Tel. +39-02-5520041 / Fax +39-02-5694834
E-mail info@lincobaxo.com
www.lincobaxo.com



CHINA CORPORATE HEADQUARTERS:
LINCO BAXO China Ltd
Room 301, Unit 6, building 4, Fengniaojiayuan
Haidian District, Beijing, China
Tel. 0086-10-82860539 / Fax 0086-10-82860439
E-mail china@lincobaxo.com
www.lincobaxo.com

中国总部
林肯中国公司

地址:北京市海淀区万柳中路蜂鸟四号楼6单元301室

电话:0086-10-82860539

传真:0086-10-82860439